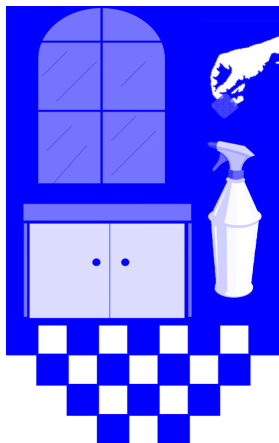


• E F F E C T I V E P E R F O R M A N C E • S A V E S S T O R A G E S P A C E • R E D U C E D P A C K A G I N G •

• E A S Y - T O - U S E • D I S P E N S E R S N O T R E Q U I R E D • M A N Y D I F F E R E N T P R O D U C T S A V A I L A B L E •



# GLASS & STAINLESS STEEL CLEANER

This versatile product will clean windows, mirrors, display cases, TV screens, formica surfaces, chrome, plexi-glass, stainless steel, aluminum and painted surfaces of appliances.

*Safe... Non-Solvent, No Alcohol, Biodegradable and Phosphate Free.  
Effective... cleans rapidly, leaving a sparkling, streak-free surface  
Versatile... use on various surfaces throughout your establishment*

## FEATURES

- Premeasured Water-Soluble Pouch – combines proportioning accuracy, with ultimate simplicity. Provides convenient, cost effective solutions. No dispensing device required.
- Spray on and Wipe off Formula leaves a streak-free surface.
- Spray and Wipe Formula... saves on labor.

## USAGE

- For spray solution: roll up on 1/6 oz pouch and drop into a spray bottle. Then fill bottle with warm water. Put on sprayer and shake gently to make a uniform solution. Spray-on / Wipe-off surface to be cleaned with a lint-free cloth or paper towel.
- For RTU bulk: roll up one 1/2 oz. pouch and drop into a 1 gallon container. Then fill with warm water and shake / stir gently to make a uniform solution.

## ENVIRONMENTAL

- Reuse bottle with sprayer – refill spray bottles with solution as needed.
- Biodegradable and Phosphate Free
- Cartons and tubs are recyclable
- Water soluble film is biodegradable

## PHYSICAL and CHEMICAL PROPERTIES

COLOR:	Blue/Grey	PHYSICAL STATE:	Powder
pH:	As used condition: 7.0	ODOR:	Unscented
WATER SOLUBILITY:	Complete	STABILITY:	Stable

## PRECAUTIONS

- Keep out of reach of children
- DO NOT use this product in conjunction with chlorine products.
- DO NOT handle pouches with wet hands
- Keep container tightly sealed and stored in a cool, dry place
- 24HR Emergency Response Number 1-800-255-3924

## STATUS

**TDG Classification:** Not regulated by TDG

## PRODUCT CODE and PACKAGING

- #111-15-50 1 carton x 50 x 1/2 oz water soluble pouches (RTU solution)
- #211-5-150 1 carton x 150 x 1/6 oz water soluble pouches (RTU spray application)

*Refer to Safety Data Sheet for further information*

Visit our website  
[www.meterpak.com](http://www.meterpak.com)  
For general information  
and product line